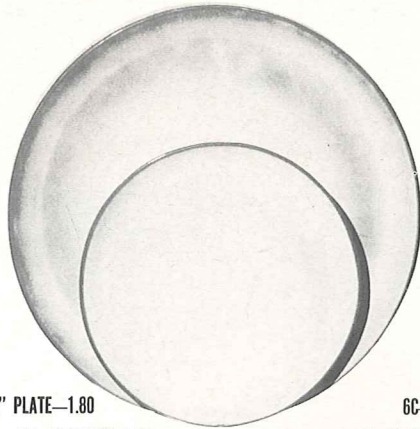


*4K—BUTTER DISH—2.00



6F—10" PLATE—1.80

6G—PLATE 7"—1.00



6B—SUGAR WITH LID—1.50



6A—9 OZ CREAMER—1.00

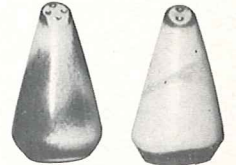


*6VT—2½ QT. TUREEN—4.00



6C—CUP—.90

6E—5" WELLED SAUCER—.75



*6H—SALT & PEPPER—1.50



*6V—2½ QT. BAKER—4.00



*5LC—6 OZ. JUICE—.75



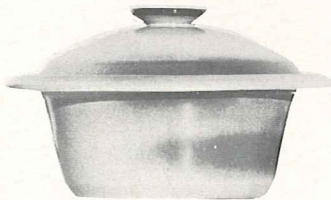
*5L—12 OZ. TUMBLER—.90



*6CL—DOUBLE COFFEE—1.00



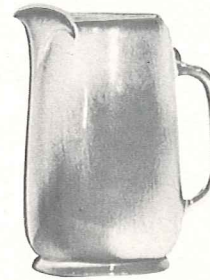
*80—2 QT. PITCHER—2.50



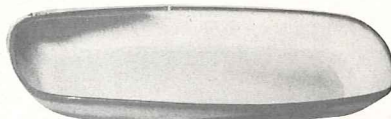
*6VS—1½ QT. BAKER—3.00



*6T—6 CUP TEA POT—2.50



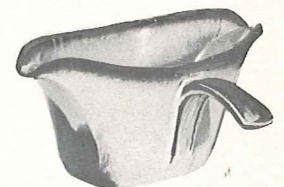
*81—1 QT. PITCHER—2.00



*5QS—13" STEAK PLATE (SHALLOW PLATTER)—2.00



*6J—2 CUP TEAPOT—2.00



*6S—TWO SPOUT GRAVY—2.00



*6U—18 OZ. BAKER-FOR-TWO—2.00
A COVERED CANDY DISH

*6P—11" STEAK PLATE—1.80

*5PS—9" TRAY—1.50

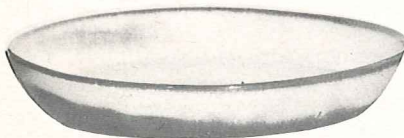


*6P—6 OZ. BEAN POT—.75

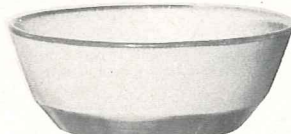


6X—14 OZ. CHILI SOUP—1.00

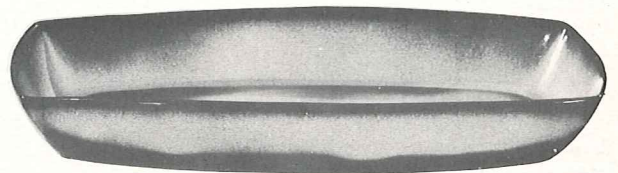
6XS—10 OZ. FRUIT—.80



*91—10" BAKING DISH—2.00

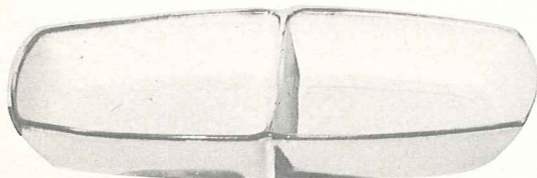


*6N—1 QT. BOWL—1.50

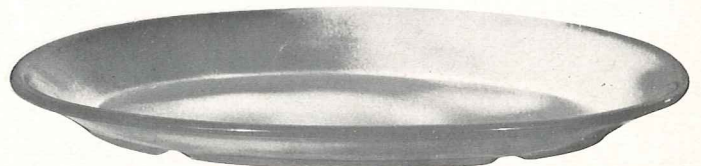


*5P—17" DEEP PLATTER—5.00

*5Q—13" DEEP PLATTER—2.50



5QD—13" DIVIDED BOWL—2.50



*TP—17" OVAL PLATTER—5.00